



Kuwait Environment Public Authority
Compliance Information Management System
EQIS Data Processor (EDP) Installation Guide

Ver 1.2 – 6 August 2017

Prepared by:

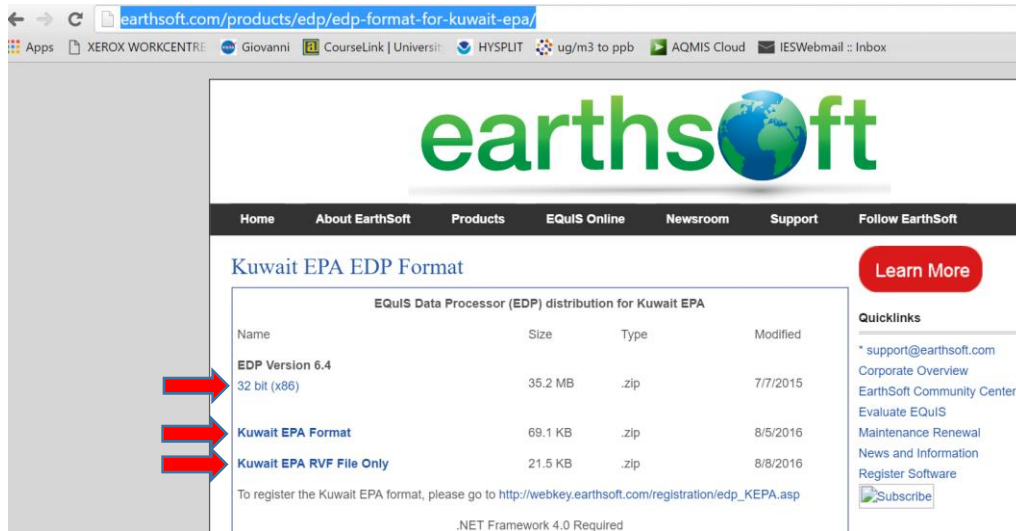


Version	Date Released	Prepared by	Reviewed by	Approved by
1	11 Aug 2016	BF	BF	BF
1.2	7 Aug 2017	BF	BF	BF

Website : www.iestech.net

Email : cims@iestech.net

1. Download the Standalone EDP and format files from the Earthsoft website (<http://earthsoft.com/products/edp/edp-format-for-kuwait-epa/>)



For first time users, download all 3 files (EDP Version 6.4 – 32 bit, Kuwait EPA Format, and Kuwait EPA RVF File only). The files download as zip files. Check back to see if the RVF files get updated. If so, download the latest RVF file here.

WARNING – Consult your IT security policy on zip downloads. Only download and extract from trusted sites.

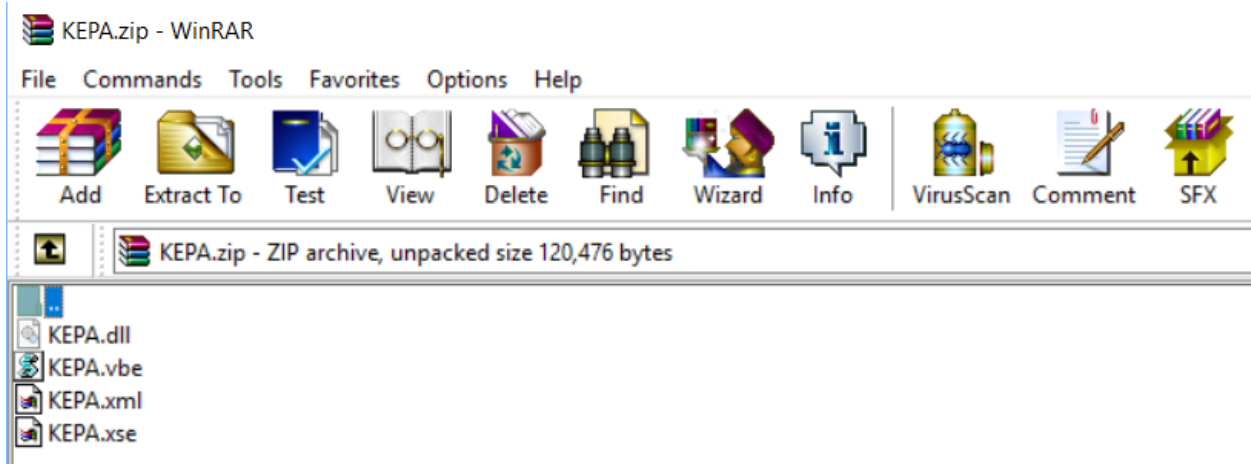
2. Install the EDP as instructed through the installation wizard.

IMPORTANT INSTALLATION NOTES:

- The EDP does not use the internet after it has been installed. It is advisable to have a machine with internet access to assist in the registration and licensing.
- It does not matter which drive the EDP is installed in. However, Microsoft .NET 4.0 is required on the machine. If you do not know if .NET 4.0 is installed, contact your IT Department or click **Start** on your Windows desktop, selecting **Control Panel**, and then double-clicking **Add or Remove Programs**. When that window appears, scroll through the list of applications. If you see Microsoft .NET Framework 4.0 listed, the latest version is already installed and you do not need to install it again. If you need to install .NET 4.0, you can download it for free from Microsoft at <https://www.microsoft.com/en-us/download/details.aspx?id=17851>

3. The **KEPA Format** and **KEPA RVF files** are also in .zip files. Extract all files into a common folder that is easy to remember and access.

- The RVF file contains the data for the reference tables used by the EDP to check the values of the data submitted in the EDP. The RVF file may change as new references are updated.



4. Open the EDP and Register the license by following the pop-up form that will activate when you open the EDP for the first time. Click the link to Register on the form. The link will take you to a registration page and automatically fill in the Computer ID for you.

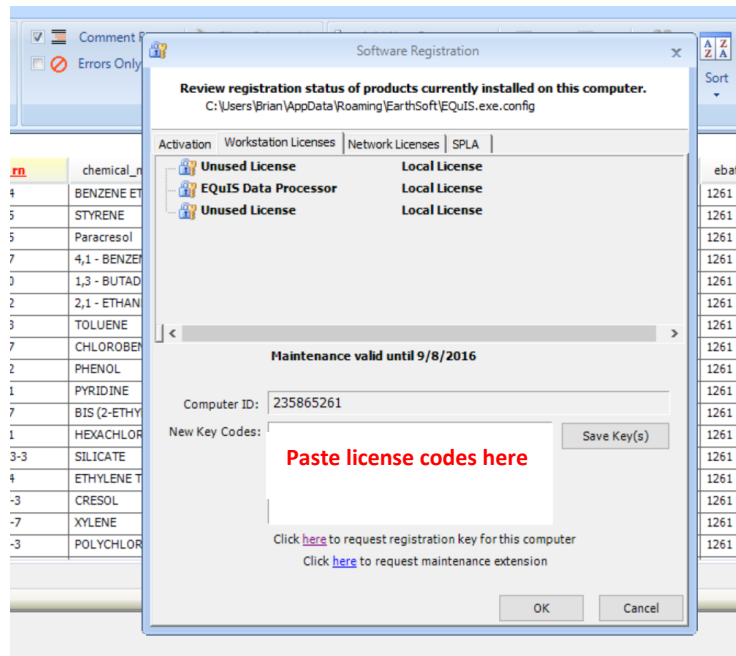
The Computer ID is an Earthsoft generated value based on computer. You cannot change it. This insures that EDP license is only valid for the machine it was installed on.



If the machine does not have internet access, copy the Computer ID by going to the EDP registration form – Workstation License tab and fill in the code manually. The Earthsoft registration page is at http://webkey.earthsoft.com/registration/edp_KEPA.asp

If you need to change machines or add to other machines, you will need to install a separate copy of the EDP and register the individual machine.

Earthsoft will issue you license codes within 24 hours to the email listed on the registration form. Copy these codes and paste them in the Workstation License tab when you start up EDP.



5. Depending how you extract the Format and RVF files from the downloaded zip file, you may have to reset permissions. Right-click on the properties of the KEPA.xse file and change the access setting to shared.