



# Air

**Simplifies GHG Reporting • Performs Complex Calculations • Increases Data Accuracy • Reduces Time and Effort**

*Air emissions reporting — including greenhouse gas (GHG) tracking — can be a complex and expensive process. You need an enterprise emissions tracking system to quickly show senior managers how changes in your everyday operations can impact everything from local regulatory compliance to global carbon offset strategies. Essential Air™ calculates and reports air emissions and then compares them to permit limits for all of your emissions sources, wherever they're located, so you can save time, cut costs, and improve reporting consistency.*



Essential systems and services for **Environmental Management**

## Regulatory Compliance Simplified

*Essential Air™* is the world's most widely installed air emissions reporting tool. Users throughout industry and government find it unequalled in its ability to help maintain emissions inventories, verify compliance with permit limits and plan the permit modifications required to support an ever-changing operational environment. Reflecting the real-world experience of the industry professionals who built it, *Essential Air* increases emissions reporting accuracy, improves the use and availability of compliance data throughout the organization, provides more timely and detailed information, and establishes a platform for achieving enterprise-wide emissions best practices.

## Improves Reporting Consistency

Corporate reporting for SARA 313, emissions inventories, fee statements and many other requirements involve harvesting data from multiple sources. Often, these reports are generated independently of one another, by different individuals using different data and different assumptions. Not only does this result in duplicated effort, but it could potentially expose your enterprise to fines and penalties. *Essential Air* provides a single data repository and reporting tool to eliminate inconsistent reporting and save you time and money.

## Calculates Emissions Hourly, Daily, Monthly, and Annually

*Essential Air* supports emissions reporting for any permit compliance schedule. The software helps you measure emissions using multiple operating scenarios for each emission source in your enterprise. From the unit level to the entire corporation, for example, *Essential Air* can help you collect, calculate, and report actual carbon emissions for both direct and indirect sources. *Essential Air* also makes it easy to calculate and report emissions as required, including rolling averages to support permit compliance verification.



*Easily develop your own enterprise-wide best practices for emissions modeling. Emissions models support air, water, waste, or any other output.*



## Performs Every Calculation You Need

*Essential Air* is delivered with a library of emissions equations and performs engineering calculations for material balances, emission factors, AP42 emission equations, source test values and more. You can even perform calculations on a pollutant-by-pollutant basis. If your needs are extremely specific, use the intuitive equation builder to easily create your own emission equations. They can reference system variables, global constants, equation constants and monitoring variables.

## Helps in Developing Best Practices

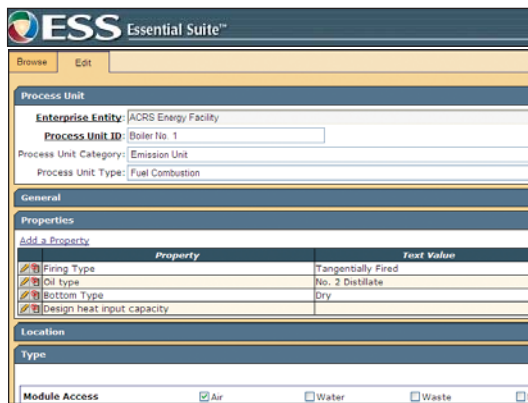
Since your custom equations become a part of the standardized library and are accessible across the enterprise, you ensure that uniform calculation

methodologies are applied to multiple source types. The result is a simplified approach to developing enterprise-wide emission management best practices.

## Rolls Up Data for GHG, SARA 313 and Other Multi-Locational Reporting

Many companies find compiling and reporting on emissions across multiple locations for GHG tracking, SARA 313 compliance and other purposes to be the most difficult tasks they're asked to perform. With *Essential Air*, report generation is as easy as "point and click." The system collects, monitors and automatically rolls up enterprise-wide data on multiple sources from single or multiple sites to simplify the preparation of greenhouse gas or SARA 313 Form R reports, organizational summaries and performance analyses.

Maintaining an equipment inventory of all emission sources, control devices and emission points is easy with *Essential Air*™. The software allows you to track compliance categories and permits related to equipment and utilize equipment properties in emissions calculations.

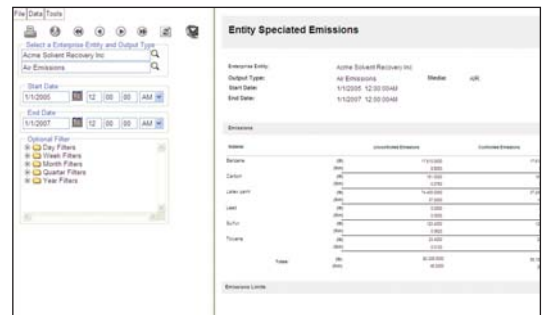


*Essential Air*™ simplifies the tracking of production information and makes it easy to calculate and view emission results.



## Part of the *Essential Suite* Platform

Best of all, *Essential Air* is fully integrated with the rest of ESS' *Essential Suite*™, the complete enterprise software platform that reduces the complexity of EH&S management in order to reduce your risks and costs.



*Essential Air*™ creates reports for Speciated Emissions at the equipment level over any time frequency. It also tracks Uncontrolled Emission, Controlled and Total Quantity of Emission Abated.